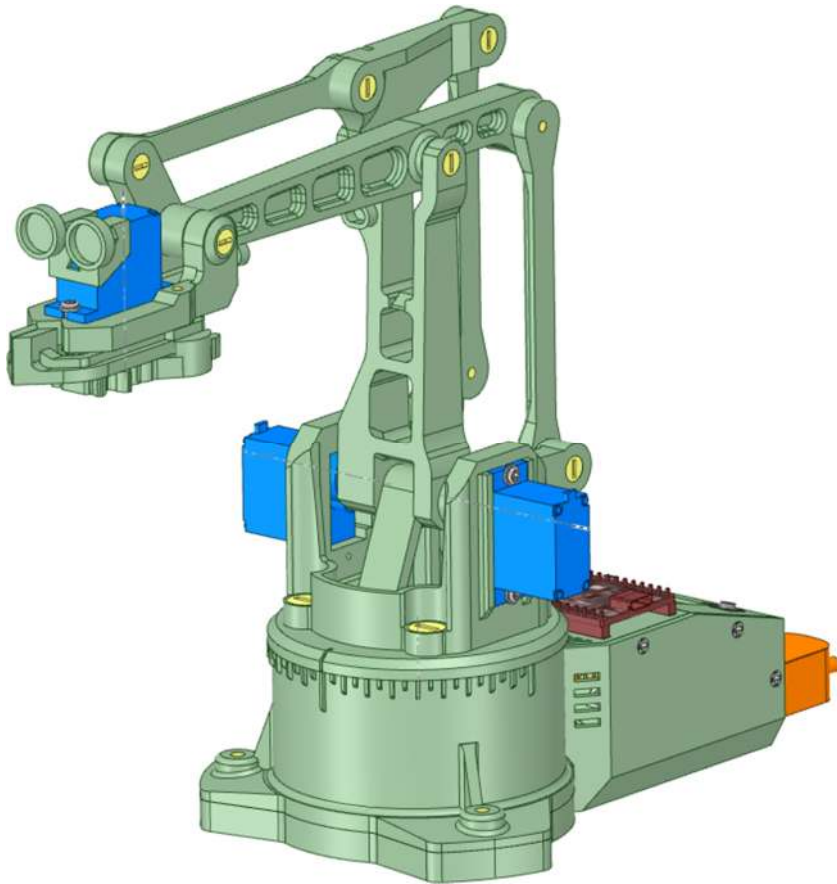


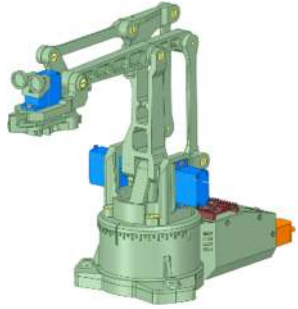
Reach Robot Mk1

3D Models



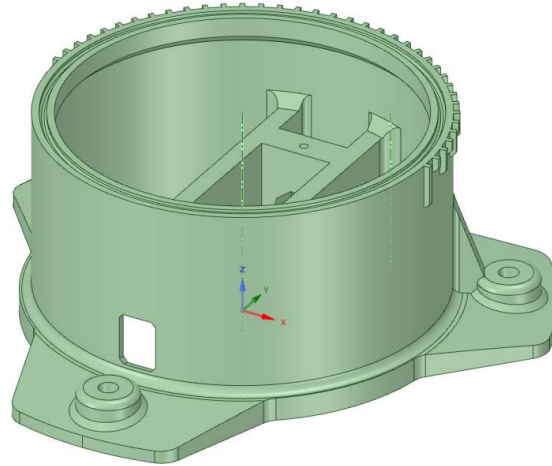
Printed Parts

Note: M3 pilot holes are 2.5mm \varnothing
Screw M3 pilot holes 1.4mm \varnothing

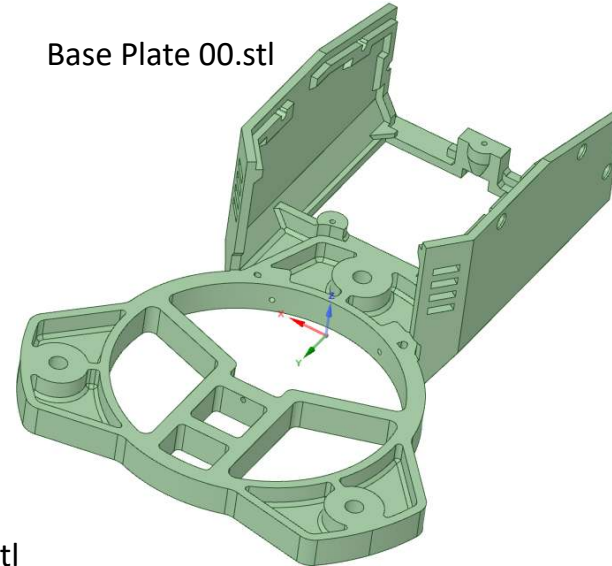


This should help you identify all of the parts needed to build the robot.

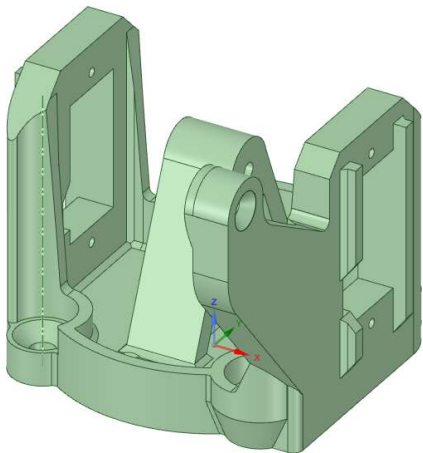
Base Mount 00.stl



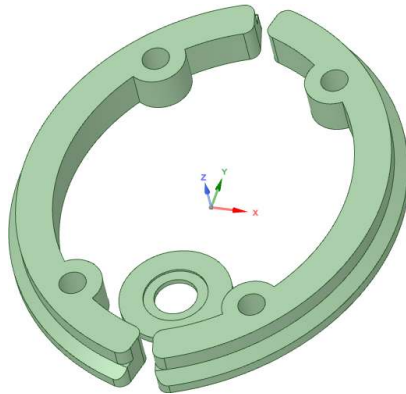
Base Plate 00.stl



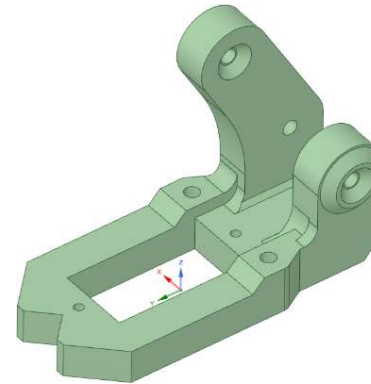
Central Structure 00.stl



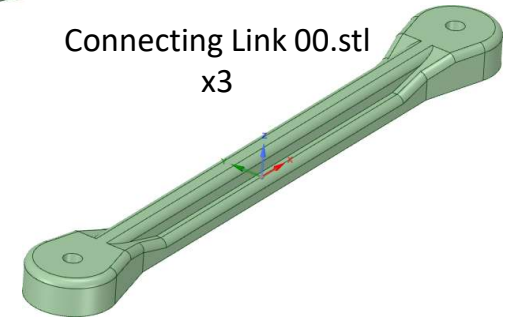
Clamp Plates 00.stl



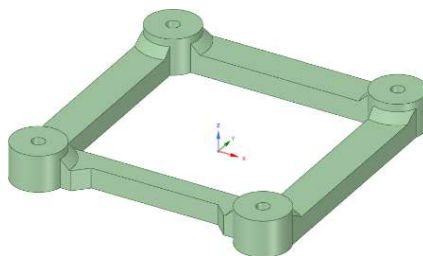
Claw 00.stl



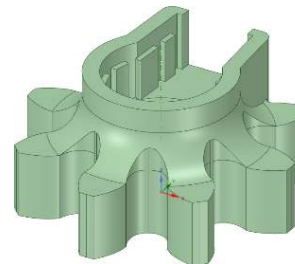
Connecting Link 00.stl
x3



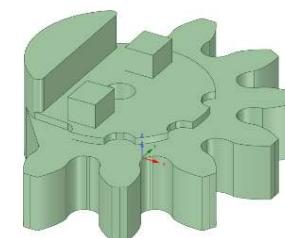
Display Strap 00.stl



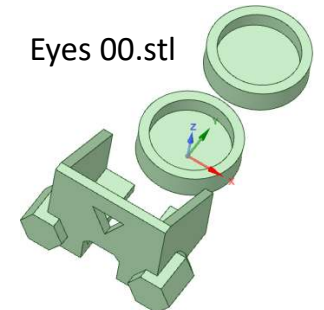
Drive Gear 00.stl



Driven Gear 00.stl

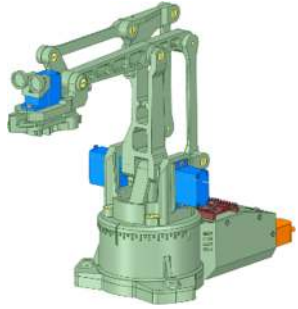


Eyes 00.stl



Models are not to scale

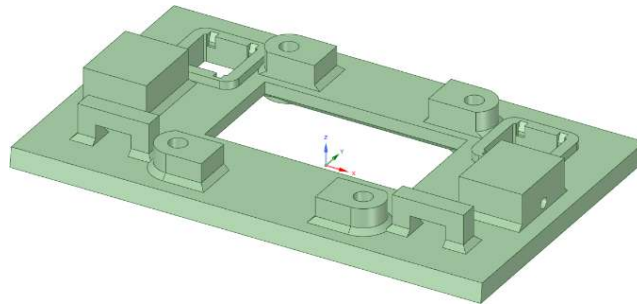
Printed Parts



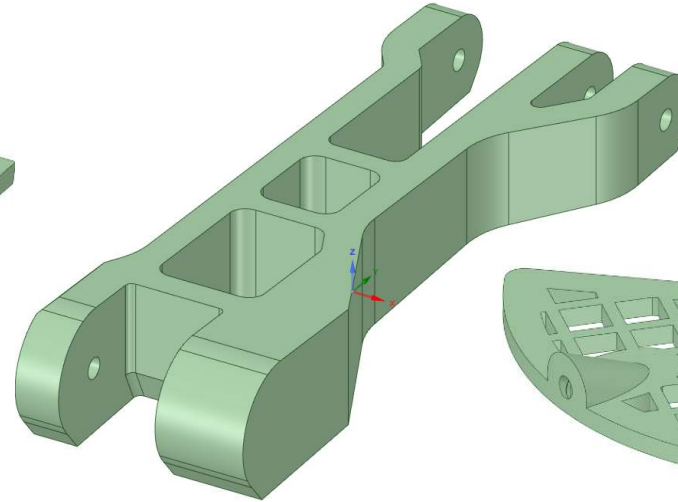
This should help you identify all of the parts needed to build the robot

Note: M3 pilot holes are 2.5mm \varnothing
Screw M3 pilot holes 1.4mm \varnothing

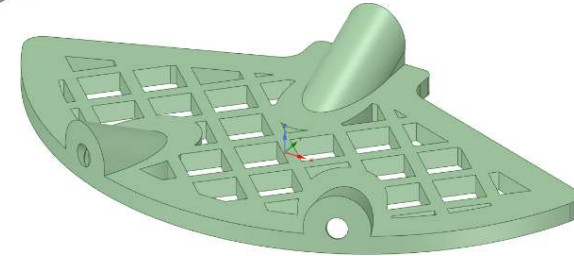
Facia Plate 00.stl



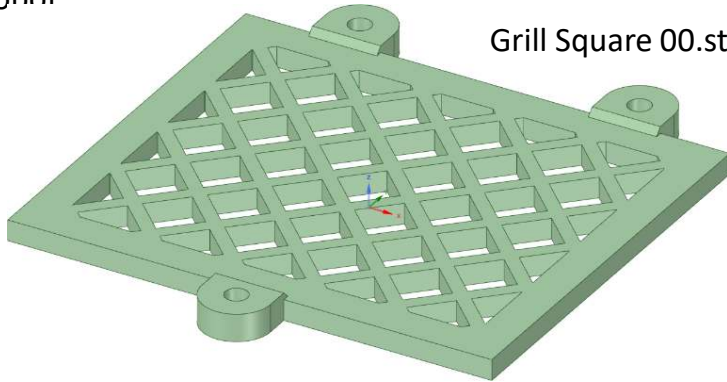
Forward Drive Arm 00.stl



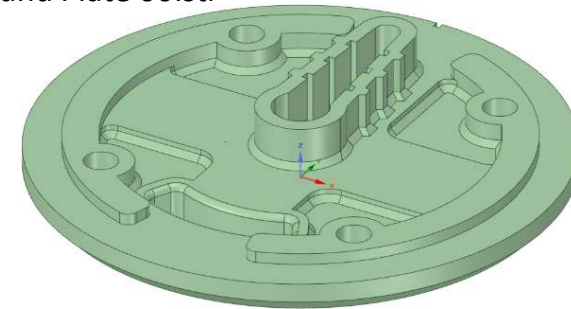
Grill Moon 00.stl



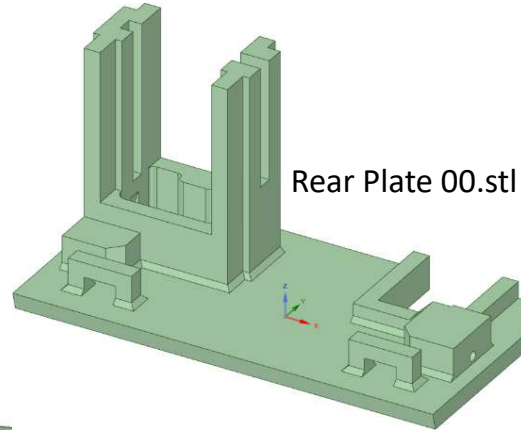
Grill Square 00.stl



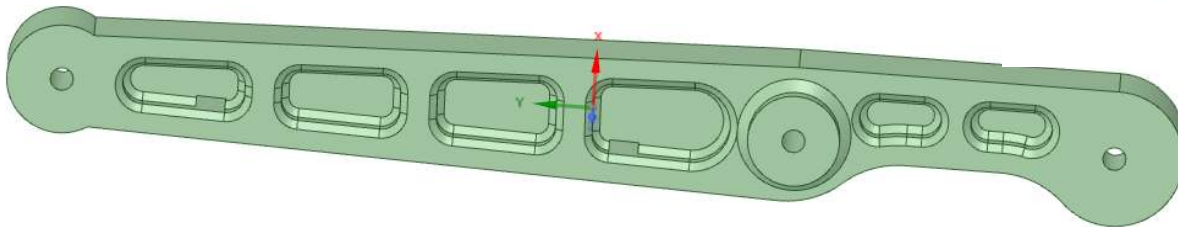
Round Plate 00.stl



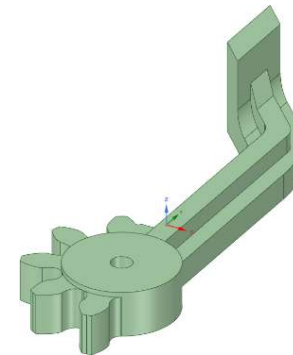
Rear Plate 00.stl



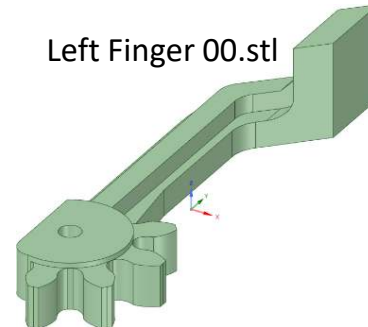
Horizontal Arm 00.stl



Right Finger 00.stl

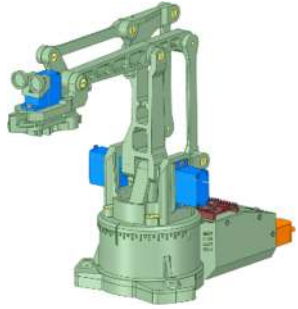


Left Finger 00.stl



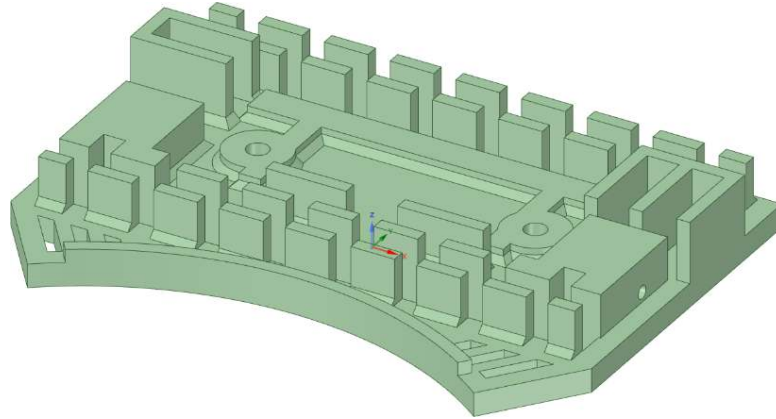
Models are not to scale

Printed Parts

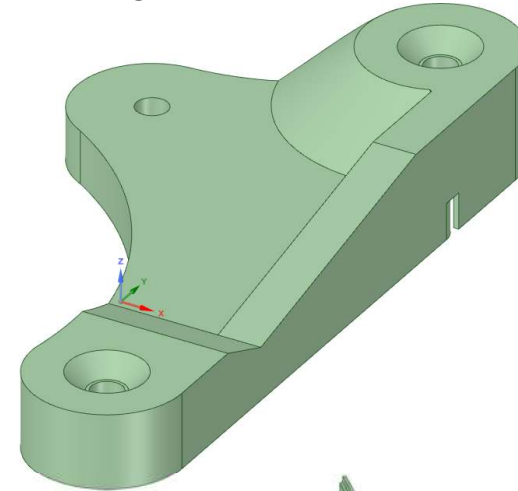


This should help you identify all of the parts needed to build the robot.

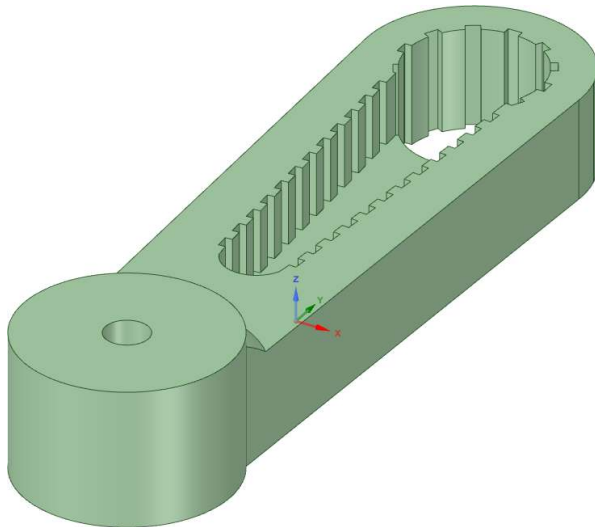
Top Plate 00.stl



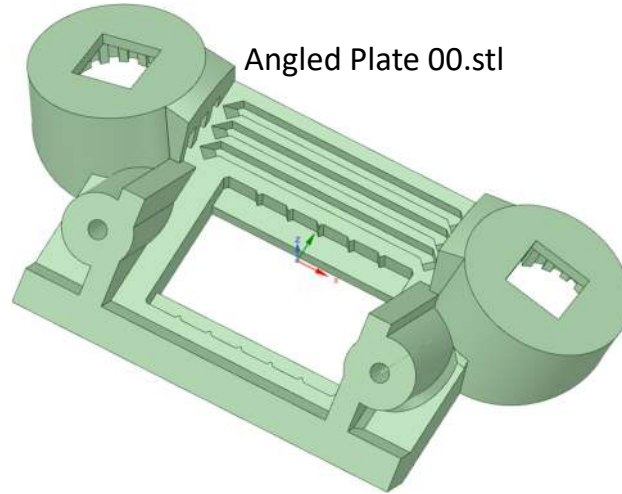
Triangular Link 00.stl



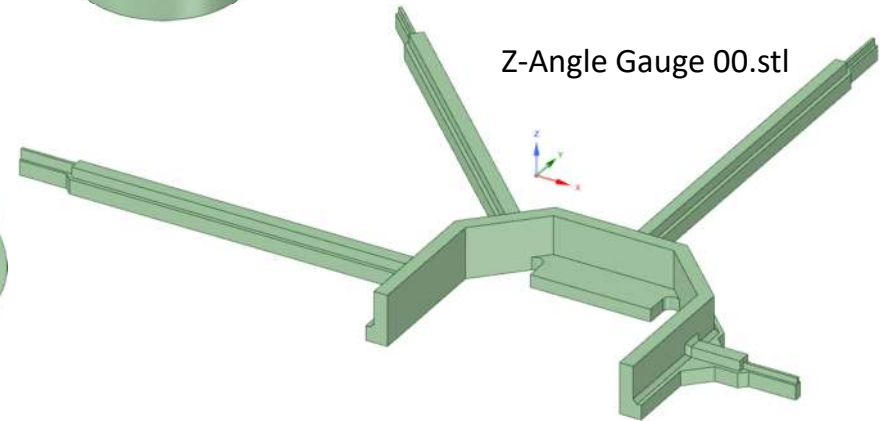
Vertical Drive Arm 00.stl



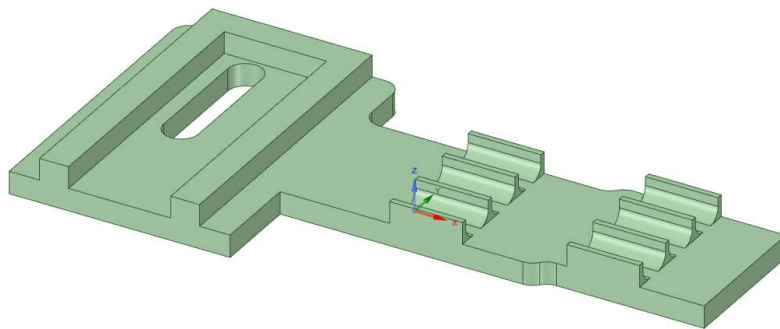
Angled Plate 00.stl



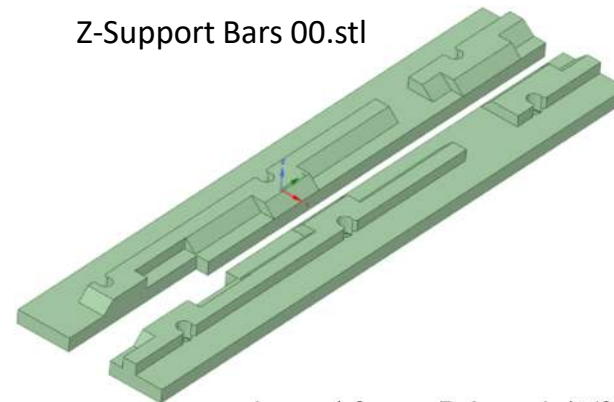
Z-Angle Gauge 00.stl



Wii Adapter Mount 00.stl



Z-Support Bars 00.stl



Note: M3 pilot holes are 2.5mm \emptyset
Screw M3 pilot holes 1.4mm \emptyset

Models are not to scale